

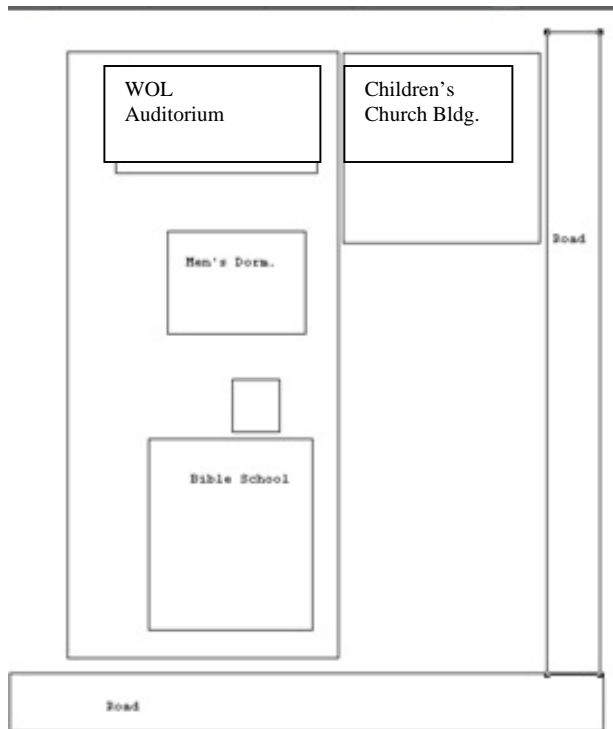
## New Children's church Building

Those of you who have visited Bungoma will recognize this. It is the view of the auditorium where Word Of Life Church meets looking to the south. Notice the tall wall. It was the compound security fence.



This is a view of the new Children's Church Building from the road looking north. When it is completed it will provide us with more areas so that we can minister to children by age groups where in the past we had to minister to them all as one group. There will be a new security wall for the compound to the left and we are looking through the opening where the new gate will be.

Please be in agreement with us for the Lord to supply all that is needed to complete construction and equip the new facility where the Children's Church will meet.



This shows the layout of the ministry compound. The Lord enabled us to obtain the land South of the compound. It gave us room to expand and a second entrance from the road on the right.



Some of you had a vision to get a bus for the children in the Jane Olson Memorial Children's Home. Here is a picture of the bus and the children. It is such a blessing and it will hold them all. I rode in a similar bus my first trip to Kenya. It will hold 15 Japanese sized adults but I didn't fit. The children, however, are quite comfortable in it. Thank each of you who had the vision - we are so blessed to have the bus.